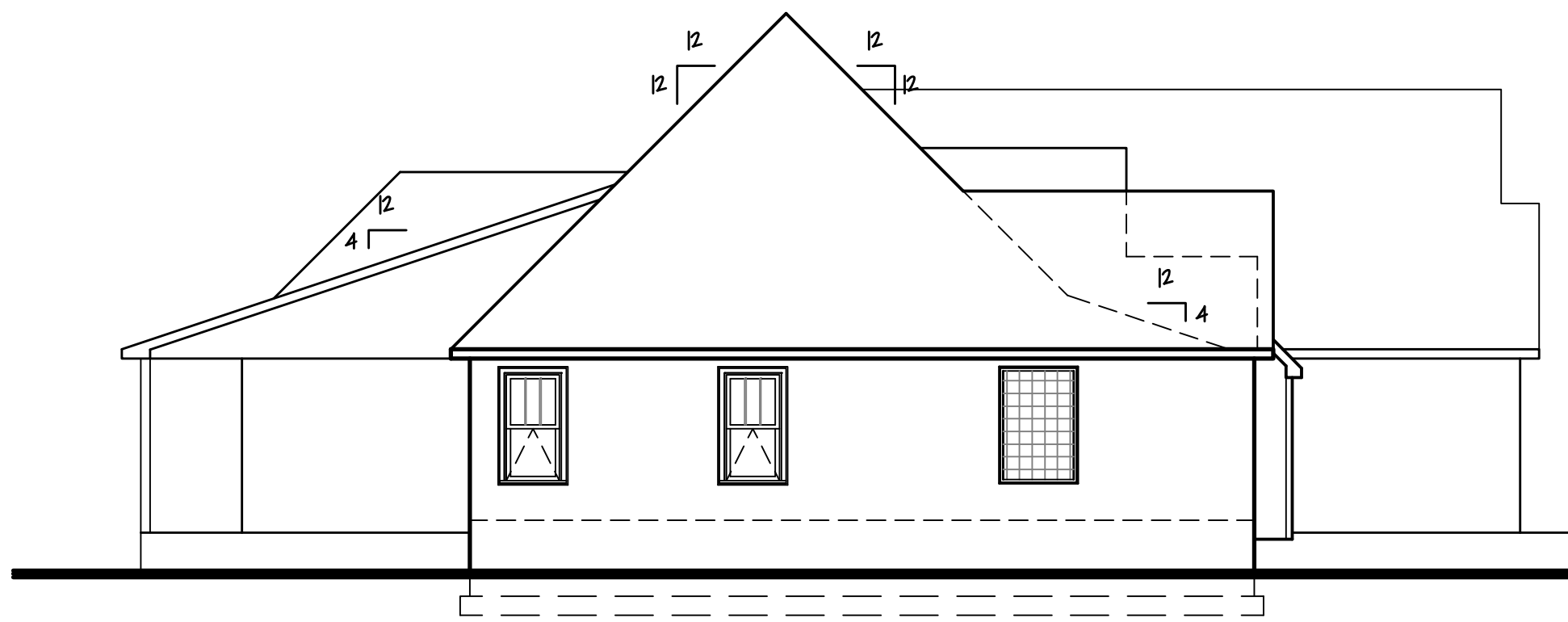


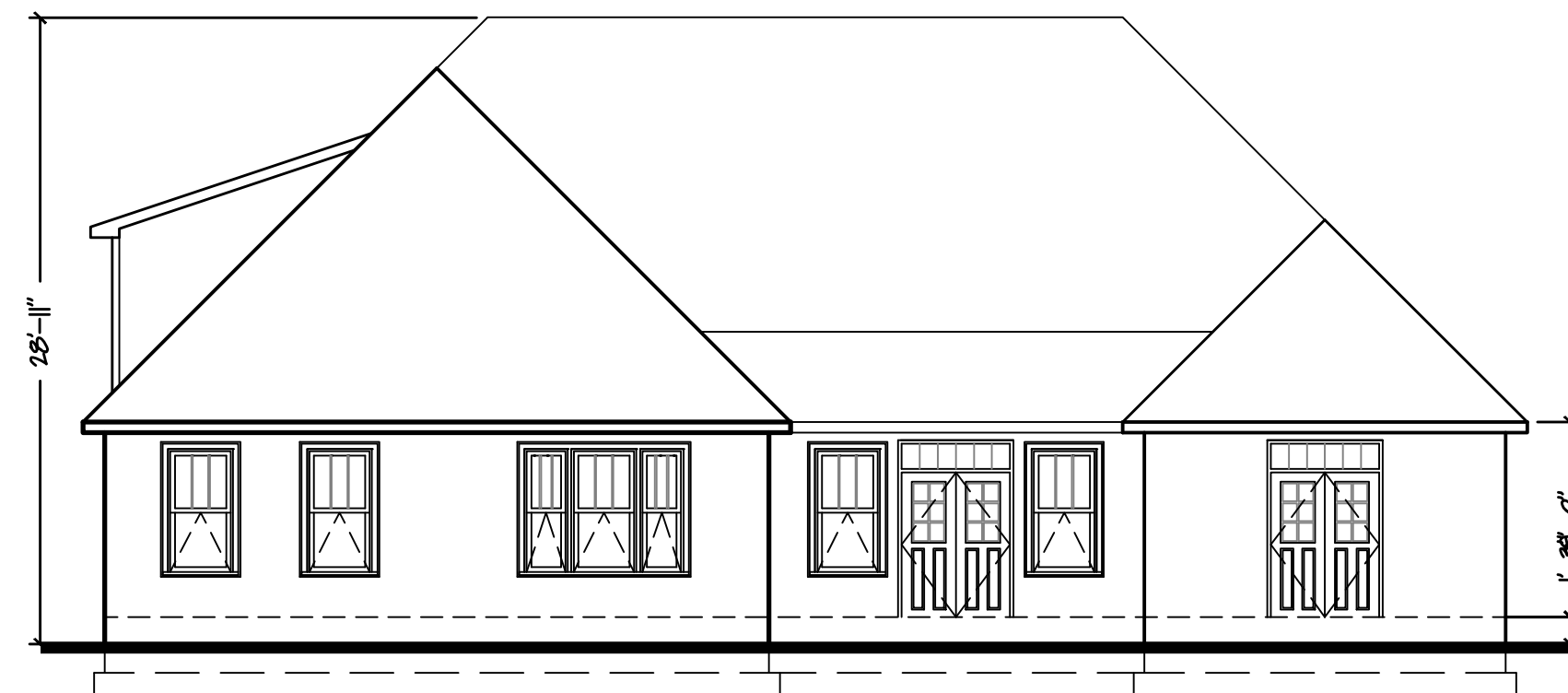
RIGHT ELEVATION
1/8" = 1'-0"



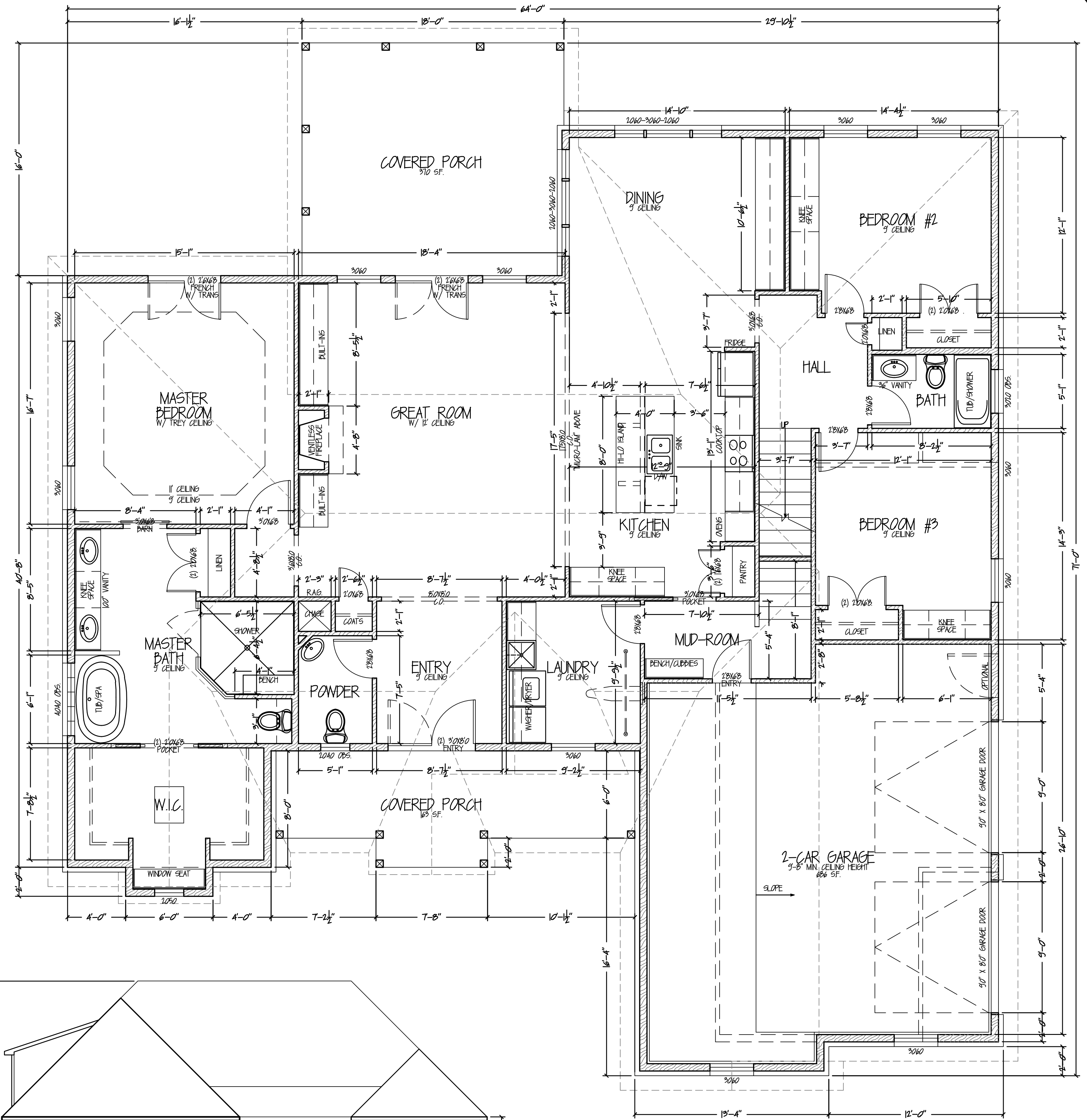
LEFT ELEVATION
1/8" = 1'-0"



FRONT ELEVATION
3/16" = 1'-0"



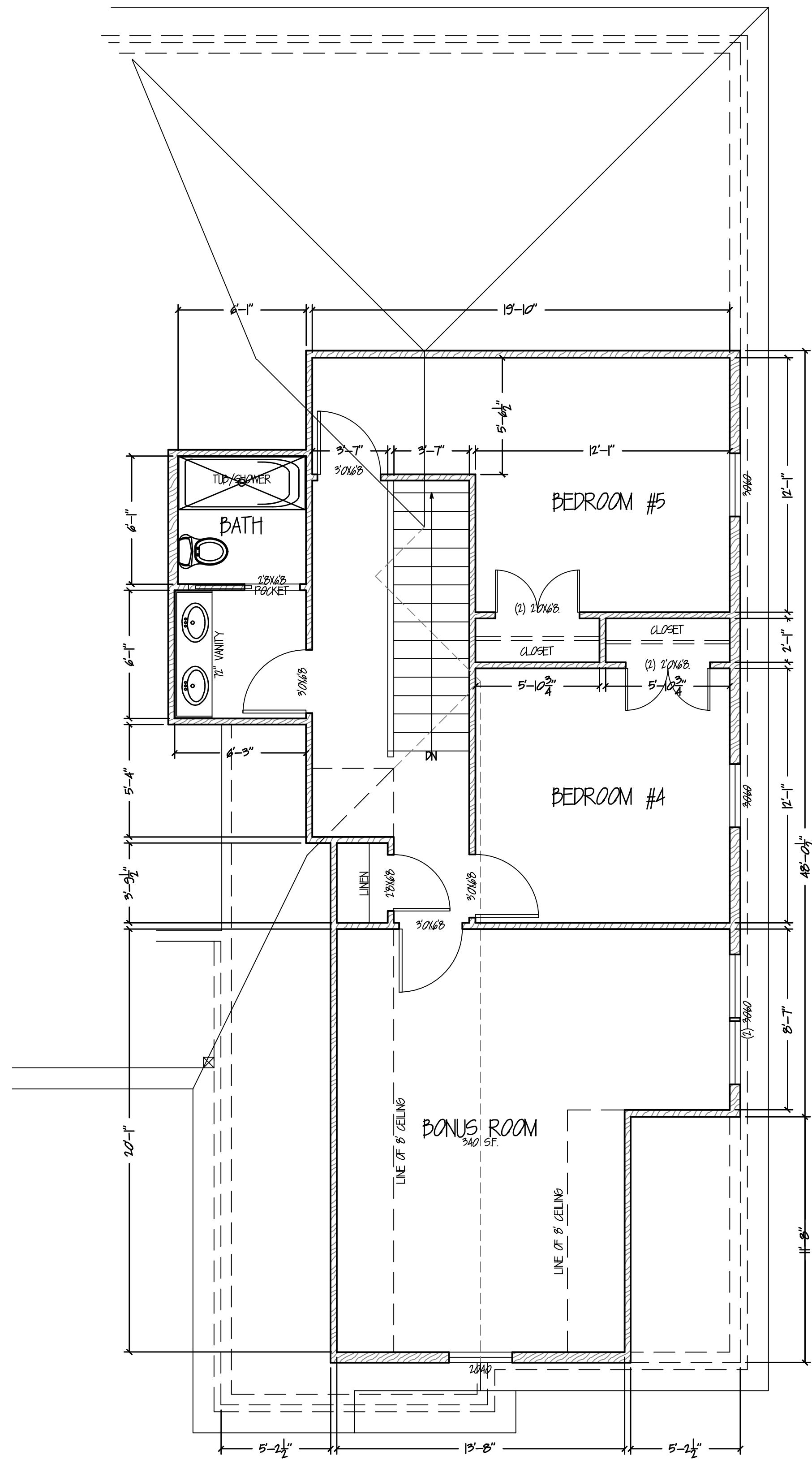
REAR ELEVATION
1/8" = 1'-0"



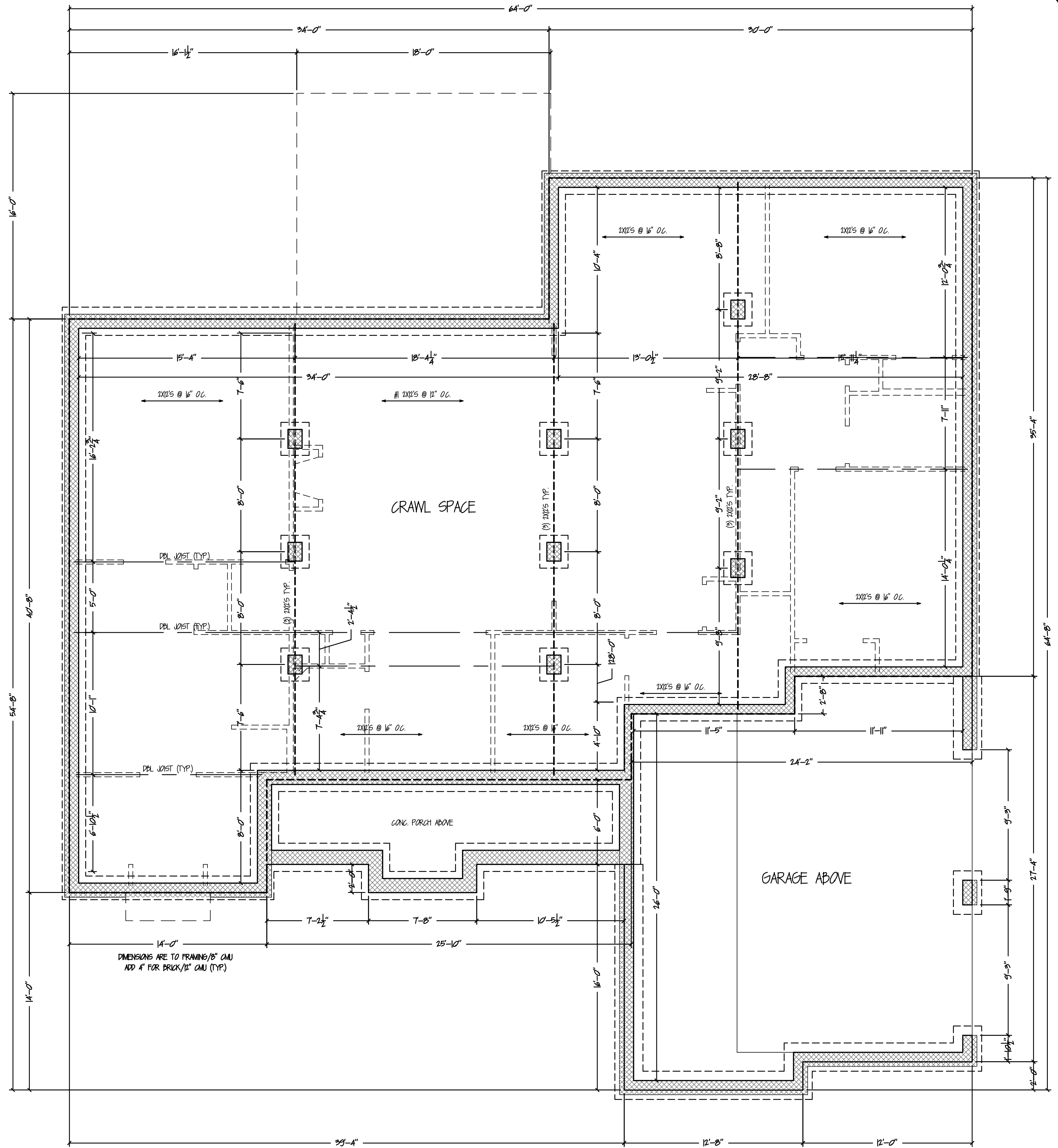
MAIN LEVEL FLOOR PLAN
1/4" = 1'-0" 2,368 S.F.

| REVISIONS | BY |
|-----------|----|
| | |
| | |
| | |
| | |

| | |
|----------|------------------|
| DRAWN | JHC |
| CHECKED | |
| APPROVED | |
| JOB NO. | 4318-Haley Belle |
| DATE | 8-31-2020 |
| SHEET | A-100 |
| OF | |
| SHEETS | |



2
A-101
1/4" = 1'-0"



1
A-101
1/4" = 1'-0"

| REVISIONS | BY |
|-----------|----|
| | |
| | |
| | |
| | |
| | |
| | |
| | |
| | |
| | |

FOUNDATION & UPPER LEVEL PLANS

THE HALEY BELLE

MID-STATE INVESTMENTS

CLARKSVILLE, TN

| | |
|----------|------------------|
| DRAWN | JHC |
| CHECKED | |
| APPROVED | |
| JOB NO. | 4318-Haley Belle |
| DATE | 8-31-2020 |
| SHEET | |

A-101

OF - SHEETS